

A close-up photograph of a wooden table edge. The table has a dark grey, matte laminate top. The wood grain is a rich, warm brown. The image is taken from a low angle, showing the edge of the table and the junction of the wood and laminate. The lighting is soft, highlighting the texture of the materials.

VERCO

nanotechnology matt laminate
care and maintenance

MATERIAL PROPERTIES

The external surface of Verco's Matt Laminate involves the use of nanotechnology and it is characterised by next generation acrylic resins, hardened and fixed with Electron Beam Curing process. With low light reflectivity, its surface is extremely opaque, anti-fingerprint and features a very pleasant soft touch. Besides the main features, such as thermal healing of microscratches, this innovative material stands out for specific properties which facilitate normal cleaning and do not require particular maintenance. In fact, it is extremely easy to clean and is resistant to mould, it has enhanced anti-bacterial properties, it is resistant to rub, scratches and abrasion, as well as to acid solvents and household reagents.

GENERAL PRECAUTIONS

For best results in cleaning Verco Nanotechnology Matt Laminate, it is important to remember certain precautions:

1. Although very durable, the surface must never be treated with products containing abrasive substances, abrasive sponges or unsuitable products, such as sandpaper or steel wool.
2. Products with a high acid or very alkaline content should be avoided because they can stain the surface.
3. When using solvents, the cloth used must be perfectly clean so as not to leave marks on the surface.
4. Avoid furniture polishes and wax based cleaners in general, because they tend to form a sticky layer on the dense surface, to which the dirt adheres.

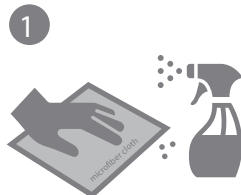
Type of dirt



Syrup, fruit juice, jam, spirits, milk, tea, coffee, wine, spirits, soap and ink.



Recommended cleaning instructions



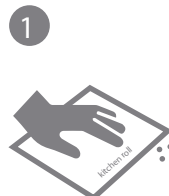
1. REMOVE any stain with a degreaser and coarse microfiber cloth.



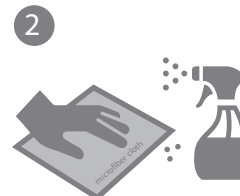
2. RINSE thoroughly using a fine microfiber cloth and warm water.



Animal and vegetable fats, sauces, blood, eggs, smoke, gelatine, vegetable and vinyl based glues, organic waste, gum arabic.



1. REMOVE with kitchen roll.



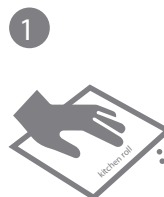
2. REMOVE any stain with a degreaser and coarse microfiber cloth.



3. RINSE thoroughly using a fine microfiber cloth and warm water.



Hair spray, vegetable oil, biro and felt tip, pens, wax, foundations and greasy make-up, residual solvent marks, nail polish, spray lacquer, linseed oil, neoprene glues, traces of silicone, lime deposits.



1. REMOVE using kitchen roll soaked in nail polish remover (acetone).



2. REMOVE any stain with a degreaser and coarse microfiber cloth.



3. RINSE thoroughly using a fine microfiber cloth and warm water.



MAINTENANCE

The everyday use of a melamine foam is recommended for the proper regeneration of the material.

Maintenance Instructions

ORDINARY MAINTENANCE

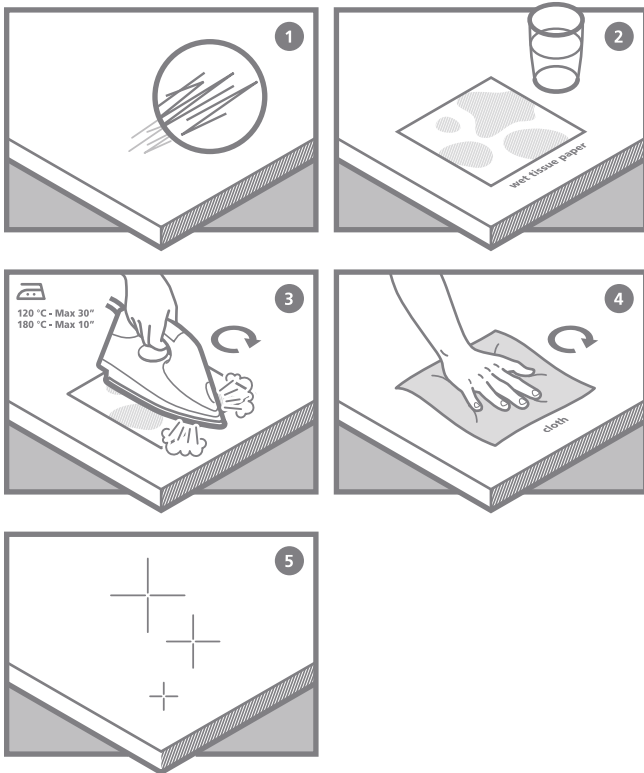
Verco's Nanotechnology laminate surface should be cleaned regularly but does not require any special maintenance, just a damp cloth with warm water or mild detergents. Almost all normal household cleaning products or disinfectants are perfectly well tolerated. It is suggested to use a melamine foam sponge - also known as magic sponge - for the normal cleaning and maintenance of the surface.

EXTRAORDINARY MAINTENANCE

In case of dirt which cannot be cleaned with normal household detergents, due to the irregular topography and closed surface of the laminate, the use of non-aggressive aromatic solvents (acetone) is suggested. In case of micro scratches, please refer to the specific surface thermal healing instructions.

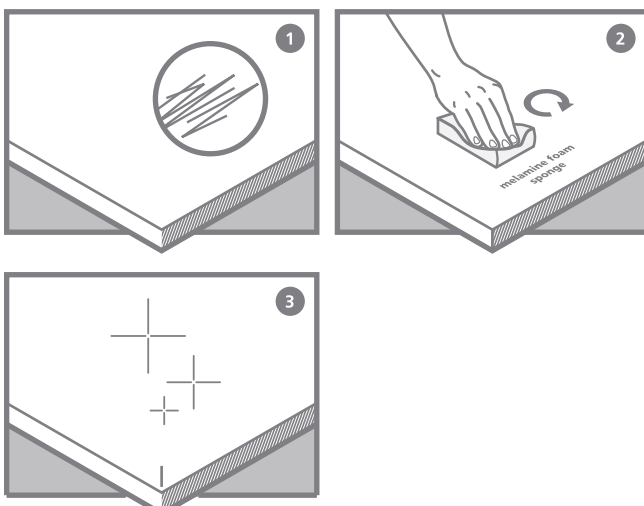
DAILY MAINTENANCE TIPS

The everyday use of a melamin foam is recommended for the proper regeneration of the material.



Maintenance Instructions - IRON

1. Superficial defects caused by micro-scratches.
2. Place a dampened kitchen roll sheet on the area where the micro-scratches can be seen.
3. Position the heated iron onto the surface that needs to be repaired. Do not leave the iron on the part of the surface for more than 10 seconds.
4. Rinse the repaired area with lukewarm water and microfiber cloth.
5. The surface should now be healed.



Maintenance Instructions - SPONGE

1. Superficial defects caused by micro-scratches.
2. Rub a melamine foam sponge on the area where the micro-scratches can be seen. The sponge can be used dry or slightly damp.
3. The surface should now be healed.