

JENSEN STUDY INSTALLATION INSTRUCTIONS

Fixings supplied:



A. M6 x 60mm Bolt, Washer, Counter sink washer



B. M6 x 20mm Bolt



C. 35mm Screw



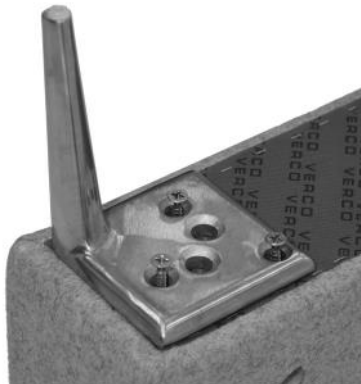
D. 35mm Screw, Counter sink washer

1. Fixings supplied to secure Legs, Seat and Slab Arm.

- Note, Seats are supplied with legs already fitted, if multiple units are supplied, the legs on the Slab Arm will already be installed.

2. Lay the Slab Arm on a clean floor to begin the fitting of the legs if required.

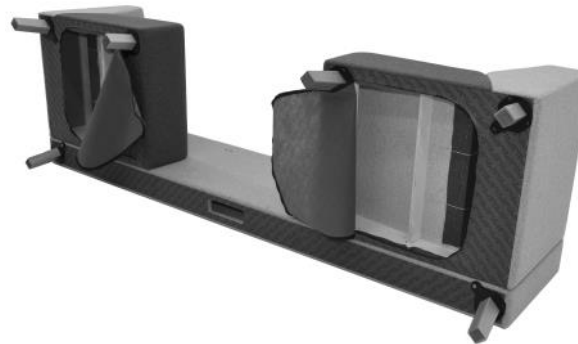
3. Metal Leg, Use 6No. C Fixings, making sure each leg is equally positioned from the Slab Arm end and sides.



4. Wooden Leg, Use 4No. B Fixings and 2No. D Fixings, to screw the two Wooden legs into the Slab Arm.



5. The Seat Units can be fitted with 12No. A Fixings.



6. Unzip the bottom cloth and line up the holes with the inserts in the Slab Arm.



7. With all the bolts located into the inserts, tighten, securing the Seat Units in place.



VERCO

CHAPEL LANE, SANDS, HIGH WYCOMBE, HP12 4BG

+44 (0) 1494 448000 www.verco.co.uk

DOC ID: AI_0004

8. Fitting the Table

When the Seat Units are secured to the Slab Arm the Table can be fitted.



9. The Table is fixed with two brackets which are located with inserts in the Slab Arm. Lightly secure the brackets to the Slab Arm with the M6 x 25mm socket head bolts.



10. With the brackets in position offer up the table, locating the pilot holes under the table with the brackets.

11. Fitting the Screen

The Screen locates through the slot in the table. The bracket is screwed to the underside of the table, and the Screen is fixed to the table using 2No. E Fixings.

Screen Fixings supplied:



E. M6 x 20mm Flat Head Socket Bolt,
M6 Nyloc Nut

